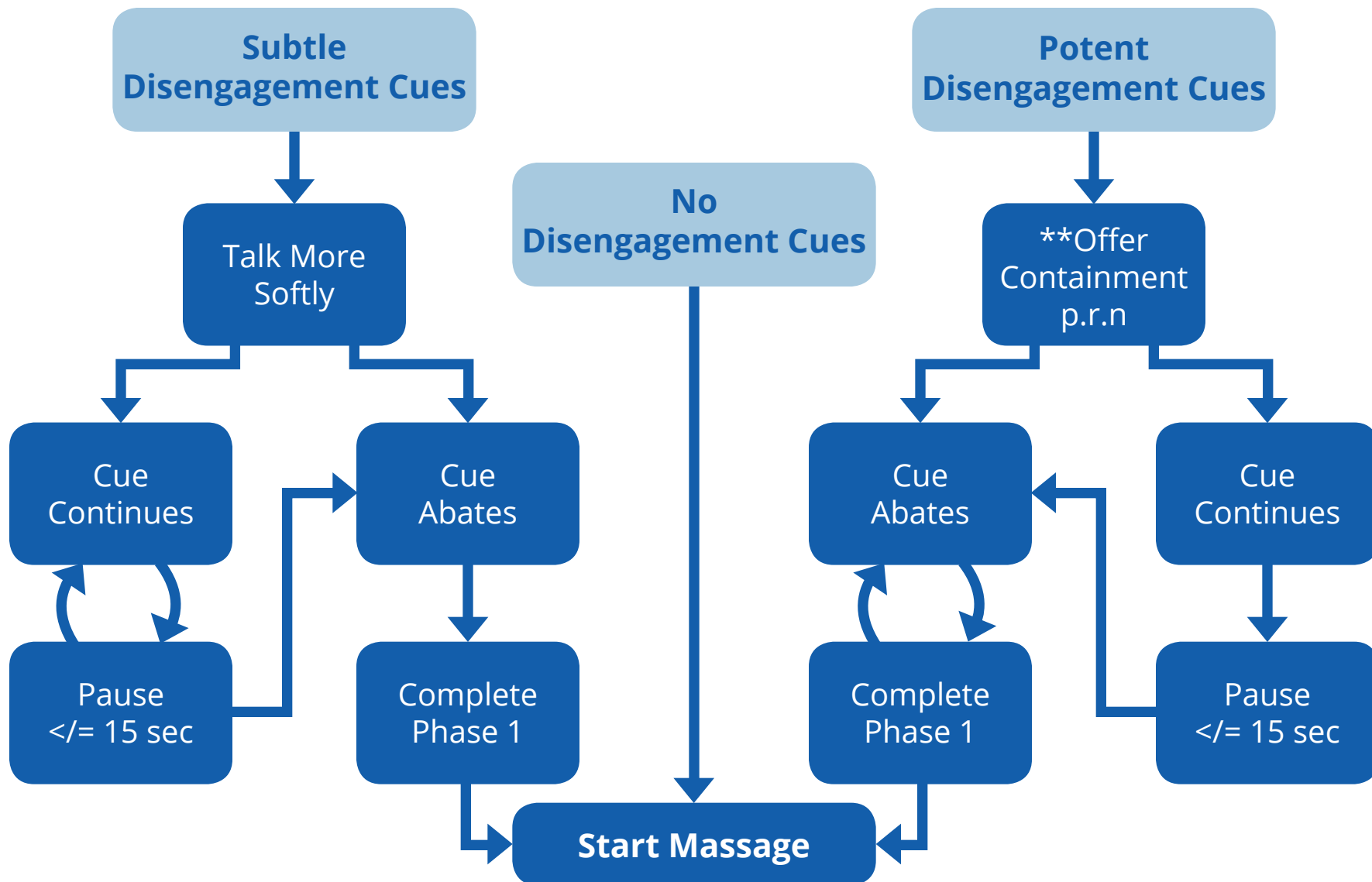


# Decision Tree: Auditory

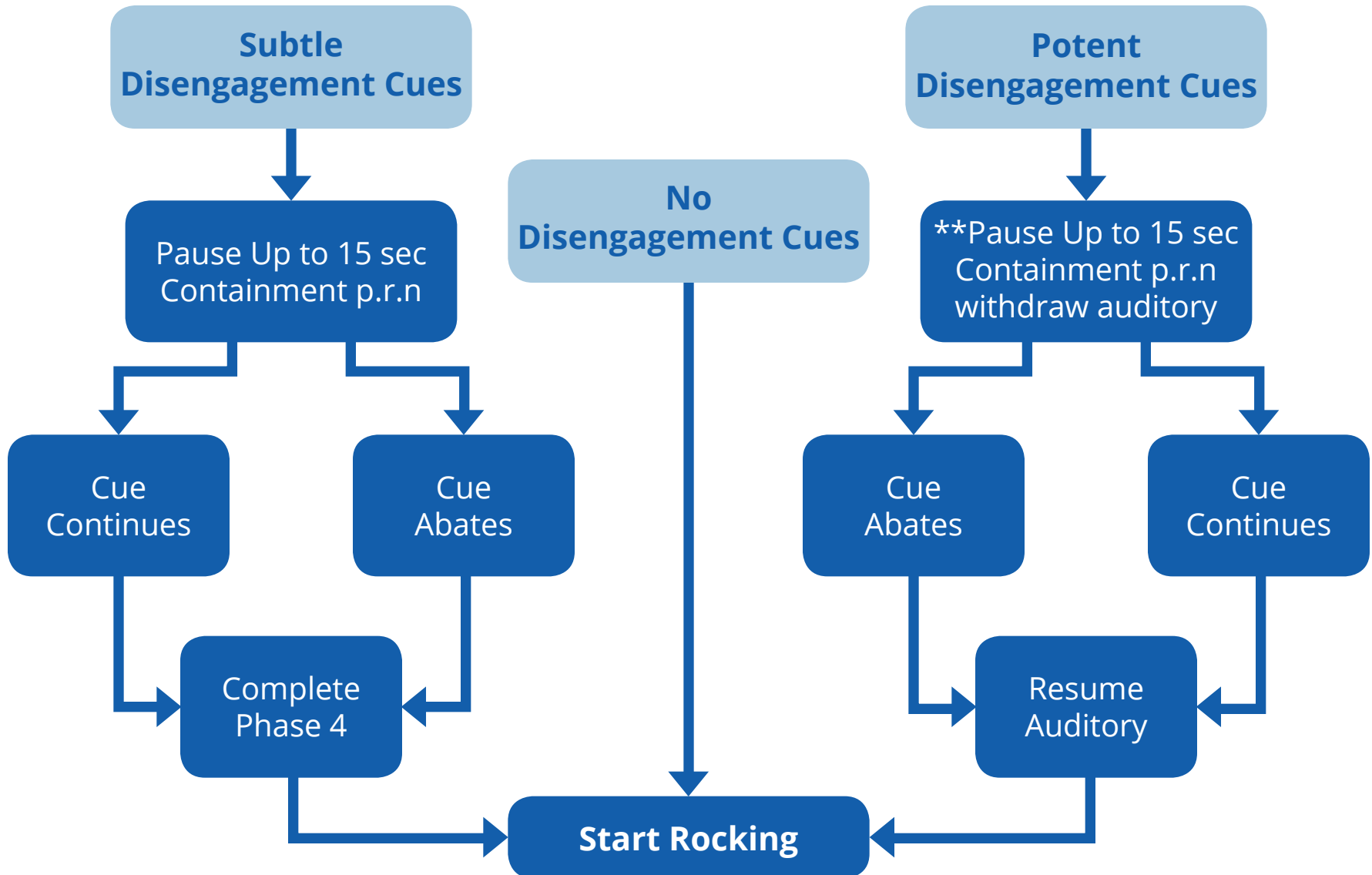
## 30 Seconds Infant Directed Talk



\*\*if infant is in state 6 and appears hungry, offer pacifier

# Decision Tree: Massage

Scalp, Chest, Arms, Legs, Back, Repeat Steps



\*\*if infant is in state 6 and appears hungry, offer pacifier

# Guidelines for Physiologic Parameters

## Heart and Respiratory Rate

HR < 100, > 200, or > 20% over baseline, or  
HR changes with SaO<sub>2</sub> < 86%, or  
HR changes with irritability, or  
RR > 20 over baseline, or  
apneic with bradycardia and/or desaturation

Pause ≤ 15 seconds

HR/RR within  
normal limits

HR/RR not within  
normal limits

Resume intervention  
15 sec post recovery

Resume intervention  
15 sec post recovery

# Guidelines for Physiologic Parameters

## Oxygen Saturation ( $\text{SaO}_2$ )

