

Individuals of All Abilities Feel They Belong When the Faith Community:

- Displays a welcoming attitude by extending open arms to individuals of all abilities.
- Chooses words that promote dignity and respect for individuals of differing abilities.
- Removes physical barriers by using “universal design” to make buildings more accessible for everyone.
- Makes the parish, school, and religious education program accessible to all.
- Forms a TEAM Belong Ministry of committed people, including members with disabilities, to ensure that all abilities belong.

For free tools and grants of up to \$1,000 to welcome worshippers of all abilities visit or call:

www.TEAMBelong.org
1-800-364-1337

Welcoming Individuals of All Abilities is Important

When we recognize and welcome the gifts of all people, even the most vulnerable among us, our faith communities and schools are strengthened.

Please join TEAM Belong to ensure that your faith community and religious school reaches out to individuals who happen to have disabilities to ask, “What can we do to welcome you and your family into our faith community?”

TEAM Belong
That Every Ability May Belong
www.TEAMBelong.org
1-800-364-1337

TEAM Belong | **Pathways**
That Every Ability May Belong .org®

TEAM Belong: That Every Ability May Belong
is a program of Pathways.org
www.Pathways.org

TEAM Belong |
That Every Ability May Belong

Pathways
.org®

TEAM Belong
That Every Ability May Belong



Tools to Create Belonging
For Individuals of All Abilities
In Communities of Faith

Did You Know?

- One in four adults - 61 million Americans - have a disability. Mobility, cognitive, hearing, and vision differences are most common.*

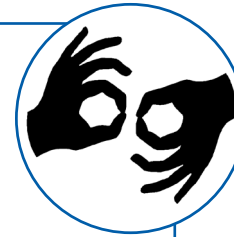
*Center for Disease Control Press Release 9/16/18

- Since 1996 TEAM Belong (formerly Inclusion In Worship) has provided interfaith educational materials about intentionally welcoming individuals of all abilities.
- When individuals of all abilities are offered the same respect and opportunity to participate and differences are accommodated, a sense of welcome and belonging is conveyed.



Use the Free Tools at www.TEAMBelong.org to:

Start a TEAM Belong Ministry



- Use our Video Training and Ministry Manual to start an ongoing ministry dedicated to intentionally creating belonging for individuals of all abilities.

Communicate Welcome

- Show dignity and respect for people of all abilities using our *People First Language and Know your Disability Etiquette* handouts.

Develop an Access Plan

- Use *Reflecting on Belonging* to address any attitudinal barriers.
- Use our *Facilities Survey* and *Survey of Needs* to determine accommodations necessary.
- Prioritize projects with our *Accessibility Plan Worksheet*.



Fund Access Projects



- Our TEAM Belong Awards and Junior TEAM Belong Awards for children and youth offer grants of up to \$1,000 to support projects that allow every ability to belong.

Download applications from our website.

Involve Children in Hospitality

- Use our *Different Gifts, Same Spirit* lesson plan series to teach 8 to 18 year olds that everyone has gifts to share.

Available from Loyola Press or download a free version from our website.

Celebrate Belonging: TEAM Belong Month

- Set aside a month to raise awareness to and educate about intentionally creating belonging for individuals of all abilities as fellow missionary disciples.